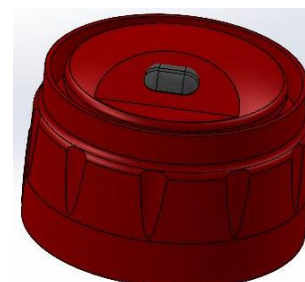


RE-601 Series

SOUNDER, STROBE & SOUNDER-STROBE: CONVENTIONAL

General

The Conventional sounder-strobe, strobe & sounder is designed to be connected Fire Alarm Systems and these should be connected to the compatible control panel. The wall mount series are designed for indoor applications and provide audio and visual warning. The conventional Sounder, sounder-strobe & Strobe receives their power from NAC terminal of Fire alarm control panel and once fire detected in the zone circuit then NAC output turns on this sounder-strobe & sounder.



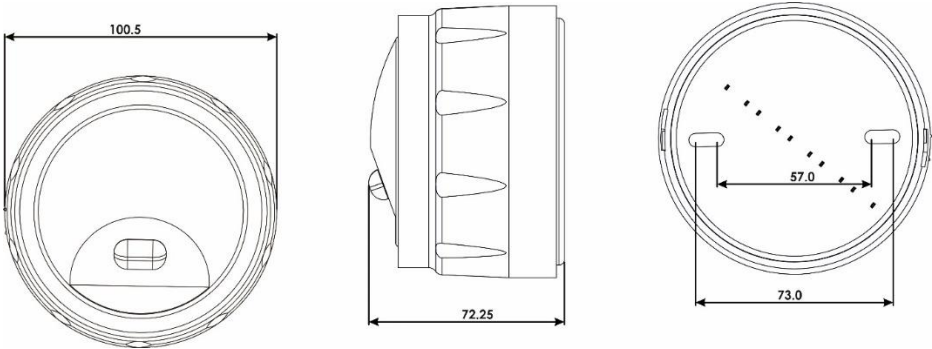
Features

- Complies to UL464, UL1638, UL1971.
- Low Standby Current.
- All Tones are Synchronizable.
- Flash duration 20 ms.
- 7 Different tone selection by using DIP 6-way DIP switch.
- Candela Low and High can be selected using DIP switch.
- Sounder and strobe OFF facility.
- Tone High and Low possible using DIP switch.
- The low frequency 520 Hz signal is unique, and is ideal for hotels, dormitories, and other sleeping occupancies.

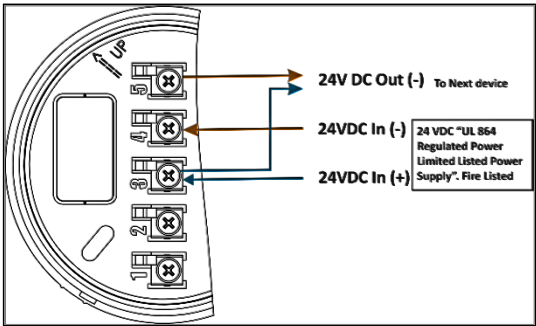
Specification

Electrical Specification	Conventional		
	RE-601SS	RE-601SO	RE-601ST
Operating Voltage	Regulated 24VDC		
Alarm Current (SLC)	16mA	4mA	12mA
External Supply voltage	Regulated 24VDC		
Sound Level 3 meter @ 24V	75dB (L)	75dB (L)	-
	85dB (H)	85dB (H)	-
Sound Element	Piezo Electric		-
Tone	7 Different Tones		-
Lens Material	Clear Lens PC	-	Clear Lens PC
Candela Intensity	L – 15 cd	-	L – 15 cd
	H – 30 cd	-	H – 30 cd
Flash Frequency	1Hz	-	1Hz
Temperature Range	0 – 49°C / 32 – 120°F		
Storage Temperature	0 – 60°C		
Humidity	93 ± 2% RH (non-condensing)		
IP rating	IP 60		
Dimensions (mm)	100.5D x 72.25H		
Material	FR-ABS plastic		
Wire Size	2.5 Sq.mm (#12 AWG) Max.		
Colour	Red		

Dimensions



Wiring Configuration



Tone Selection

DIP Switch						Tone	Description
6	5	4	3	2	1		
F L A S H C D	F L A S H	V O L U M E	0	0	0	0	Sounder OFF
			0	0	1	1	US Temporal 3 520Hz
			0	1	0	2	US Temporal 3 970Hz
			0	1	1	3	US Temporal 4 970Hz
0 - L	0 - D	0 - H	1	0	0	4	US Temporal 4 520Hz
			1	0	1	5	970Hz Continuous
1 - H	1 - E	1 - L	1	1	0	6	800 to 970Hz 1sec BS Fire Tone @ 1 Hz
			1	1	1	7	Warble Tone 800Hz for 500ms, then 1000Hz for 500ms

Compatible Panels

Models	Description
<i>Any</i>	Conventional Fire Alarm Control Panel

Ordering Information

Models	Description
RE-601SO	Conventional Sounder
RE-601SS	Conventional Sounder Strobe
RE-601ST	Conventional Strobe

India

RAVEL ELECTRONICS PVT LTD.,
150A, Electronics Industrial Estate,
Perungudi, Chennai – 96, India.
E-mail: sales@ravelfire.com; Web: www.ravelfire.com

UAE

RAVEL DMCC,
Unit No: G30, DMCC Business Center,
Level No 13, AG Tower, Dubai, UAE.
E-mail: sales@raveldmcc.com

USA

RAVEL AMERICAS INC.,
2855 NW 112th Ave ST#2 Miami,
Doral, Florida 33172, USA.
E-mail: sales.us@ravelfire.com